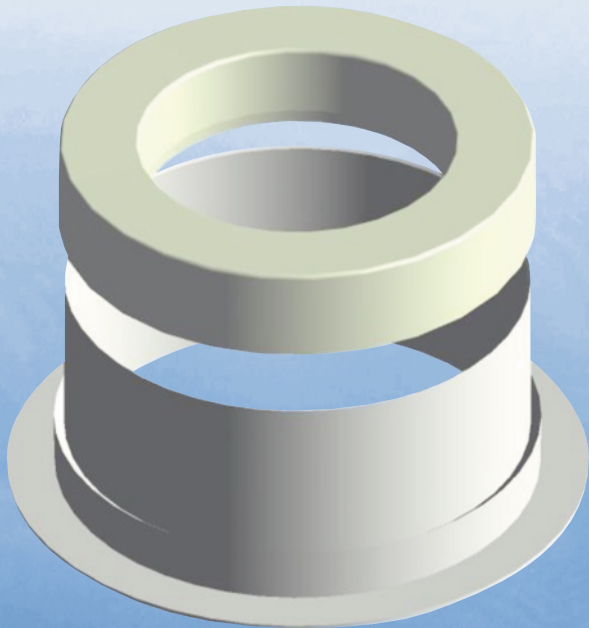


SMARTCOLLAR®

TERMITE BARRIER · HEIGHT ADJUSTABLE SUPPORT STAND



SMARTCOLLAR® is a **physical termite barrier**, 150mm diam, height adjustable support stand for SMARTWASTE and SMARTPAN. With adaptor shown, it is also suitable for other pipe penetrations.

SMARTCOLLAR®:

- ▶ Used in conjunction with Smartwaste and Smartpan it eliminates the need to reposition pipework to align fixtures and fittings.
- ▶ Used to support and secure Smartwaste or Smartpan on suspended slabs of varying thicknesses and allows for subsequent installation of a fire collar.
- ▶ The waterproofing properties of Smartwaste eliminates dampness around a pipe which normally attracts termites.
- ▶ Allows for pipe movement in the ground without affecting the integrity of the barrier.
- ▶ Has a sharp edge moulded onto the vertical wall to resist termite entry.
- ▶ Eliminates the problem facing pest control companies of re-termite proofing a pipe after concrete slab is poured.
- ▶ Termite resistance is improved around pipe in concrete slab because compaction equipment is able to move directly over the Smartwaste or Smartpan without riser pipe projecting above slab level.

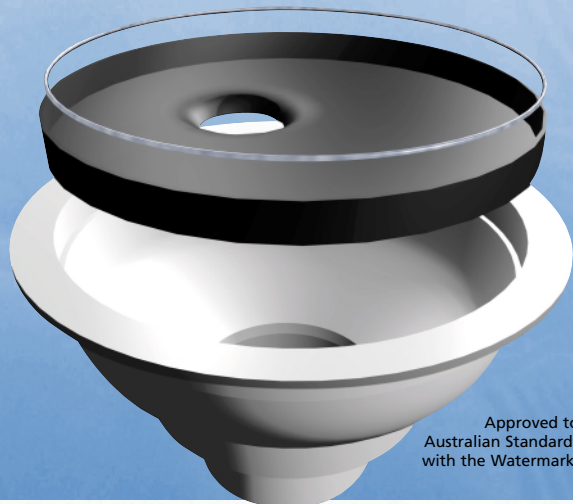
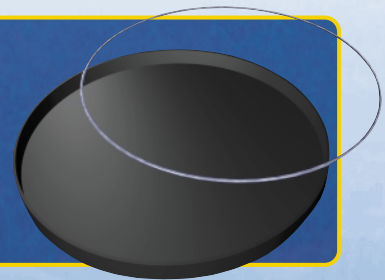
SMARTCOLLAR® was developed after discussions with Master Builders Federation, Australian Standards and pest control companies. With the huge and steadily growing problem of termite invasion it became apparent that a new device, as described above, was necessary.

Inexpensive - easy to install - effective against termite infestation

SMARTCOLLAR® is made from ABS plastic and has the CSIRO APPRAISAL #264. An adaptor is available for other pipe fittings (as shown).

SMARTSEAL®

BATHWASTE CONNECTOR



Approved to
Australian Standards
with the Watermark.

SMARTSEAL® (used in conjunction with SMARTPAN®). A breakthrough in installing Baths and shower bases **flat on the floor**.

The flexible PVC lid, 250mm in diameter, is held in place with a stainless steel pressure ring and **allows adjustable positioning**, horizontally and vertically.

The waterproof connection between either a bath or shower base and a Smartpan also **allows subsequent removal without requiring access to the connection**.

Easy to Install
Eliminates the stepup to shower
Flexible positioning